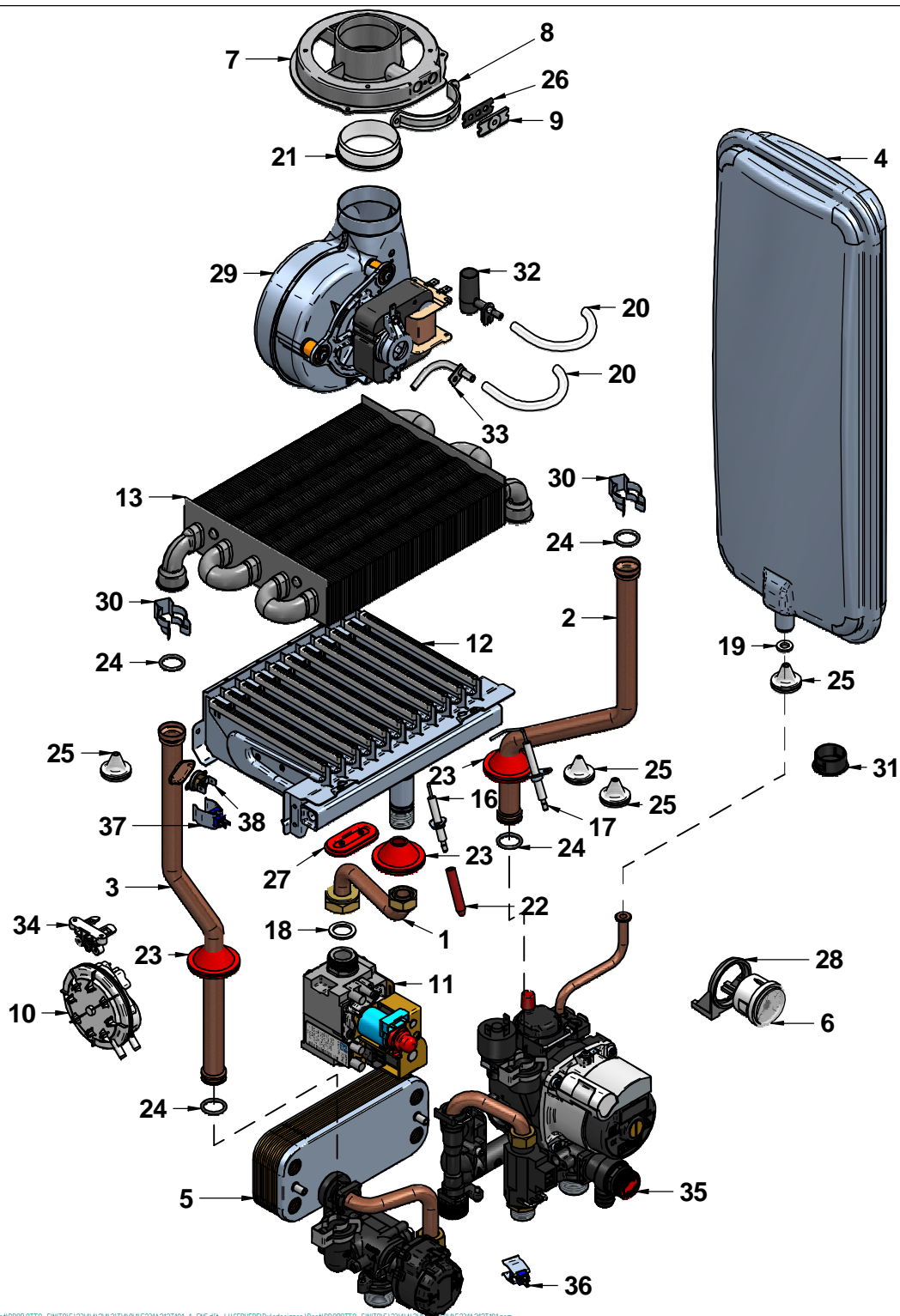


N°	Code	Description	Qty
1	12-00232	FLUE HOOD	1
2	15-00064	COMBUSTION CHAMBER FRONT PANEL	1
3	15-00090	ROOM-SEALED CHAMBER BACK PANEL	1
4	15-00147	FRAME SUPPORT RIGHT SIDE	1
5	15-00148	FRAME SUPPORT LEFT SIDE	1
6	15-00150	ROOM-SEALED CHAMBER TOP	1
7	15-00151	EXPANSION VESSEL TOP BRACKET	1
8	15-00152	CASING LEFT SIDE PANEL	1
9	15-00153	CASING RIGHT SIDE PANEL	1
10	15-00210	COMBUSTION CHAMBER RIGHT SIDE PANEL	1
11	15-00211	COMBUSTION CHAMBER LEFT SIDE PANEL	1
12	15-00264	FLUE HOOD BACK PIECE RBS23	1
13	15-00294	EXPANSION VESSEL BOTTOM BRACKET	1
14	15-01240	CONTROL PANEL LEFT SIDE BRACKET	1
15	15-01241	CONTROL PANEL RIGHT SIDE BRACKET	1
16	15-01247	BOTTOM BOILER PLATE WSR 24 PDX	1
17	15-01248	ROOM-SEALED CHAMBER BOTTOM	1
18	15-01800	FAN FIXING PLATE	1
19	30-00011	CERAMIC FIBRE FRONT SIDE	1
20	30-00014	CERAMIC FIBRE BACK SIDE	1
21	30-00025	CERAMIC FIBRE DX/SX	2
22	34542LP	FLUE HOOD LEFT DEFLECTOR	1
23	35-00156	CASING FRONT PANEL	1
24	43212LA	RIGHT/LEFT PANEL INSULATION	2
25	43213LA	ALUMINIUM ADHESIVE RIGHT/LEFT SIDE PANEL 300X220	1
26	43283LA	INSULATION FRONT PANEL M24395x520x10sp	1
27	62011LP	HOLES CLOSING PLATE Ø100	2
28	74266LP	CASING WALL HANGING BRACKET M24-RK25/34OV	1
29	74503LP	WALL HANGING BRACKET	1

Disegnatore	Rev.	data revisione	Autore revisione	Descrizione revisione
cristian.pazzagliani				
Modificato				
cristian.pazzagliani				
Data di creazione	Scala	Materiale	Sp.	Peso (Kg)
29/05/2019	155			994,9271
Note				
Descrizione completa PREMIUM 24 MET RUS - RSR 24 TR R7 PDX				
Codice			Revisione	
G231A212T101			00	

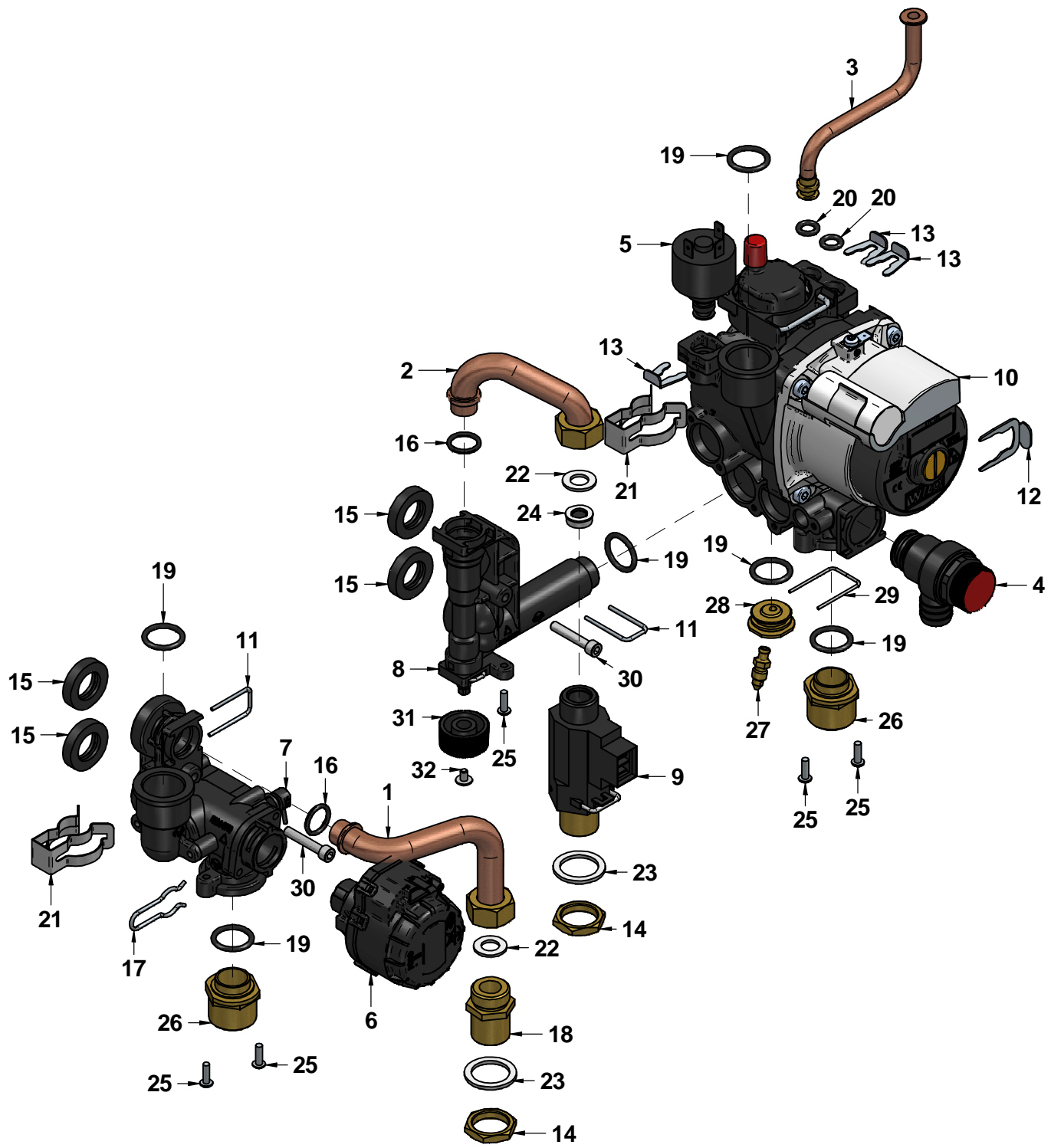




N°	Code	Description	Qty
1	12-01012	PIPE Ø14 GAS INLET	1
2	12-01558	PIPE Ø18 HTG RETURN	1
3	12-01559	PIPE Ø18 HTG FLOW	1
4	25-00283	EXPANSION VESSEL 7 LT. 3/8"	1
5	25-00483	PLATE EXCHANGER 12P	1
6	25-00485	WATER PRESSURE GAUGE	1
7	27066LA	FLUE INSPECTION	1
8	27067LA	FIXING CLAMP FLUE INSPECTION	1
9	27068LA	PLATE FOR FLUE INSPECTION CLOSURE	1
10	30-00023	AIR PRESSURE SWITCH 2.14-1.96	1
11	30-00035	SIT GAS VALVE 845 113 230V	1
12	30-00052	BURNER 11R 1.35 pitch 19 NAT.GAS	1
13	30-00084	HEAT EXCHANGER	1
14*	31265LA	SAFETY THERMOSTAT CABLE W/WASHER RBS 24	1
15*	31266LA	EXHAUST FAN CABLE RBS 24	1
16	35007LA	IGNITION ELECTRODE E. 0774527	1
17	35009LA	IONISATION ELECTRODE EL.0774929	1
18	43001LA	WASHER Ø 23.5x17x2 3/4" -AFM34	1
19	43003LA	WASHER Ø15x8x2 3/8" -AFM34	1
20	43018LA	SYLICON/TRANSPARENT PIPE Ø 8x4	2
21	43031LA	EXHAUST FAN D.54 RUBBER COLLAR	1
22	43040LA	ELECTRODE RED RUBBER CAP 0619/36	1
23	43047LA	GAS VALVE WHITE WASHER	3
24	43118LA	MAIN HEAT EXCHANGER O-RING	4
25	43154LA	HTG FLOW WHITE CONICAL WASHER	4
26	43220LA	RUBBER WASHER EPDM FLUE INSPECTION	1
27	43352LA	FB12/1 SYLICON RED WASHER-OVAL	1
28	45-00084	WATER PRESSURE GAUGE FIXING PLATE	1
29	50-00011	EXHAUST FAN	1
30	54020LA	DUAL CIRC. EXCHANGER FIXING CLIP	2
31	55-00237	CAP D.28 EXPANSION VESSEL CHARGING 7L.	1
32	57525LA	VENTURI NEGATIVE PRESSURE POINT 2008	1
33	57526LP	PRESSURE POINT MINI 24 FIME	1
34	59023LA	AIR PRESS. SWITCH FIXING CLIP	1
35	65-00344	HYDRAULIC GROUP OTMA COMPAT BLOCK 154BA PA 66	1
36	73515LA	DHW CLIP SENSOR X PIPE 13/15 mm. BLUE-T7335D1081B	1
37	73516LA	HTG CLIP SENSOR X PIPE 17/18mm BLUE	1
38	86006LA	SAFETY THERMOSTAT 95gr(ø)E.	1

Disegnatore	Rev.	data revisione	Autore revisione	Descrizione revisione
crislian.pazzagliani				
Modificato				
crislian.pazzagliani				
Data di creazione	Scala	Materiale	Sp.	Peso (Kg)
29/05/2019	14.1			9949.271
Note				
Descrizione completa PREMIUM 24 MET RUS - RSR 24 TR R7 PDX				
Codice				Revisione
G231A212T101				00

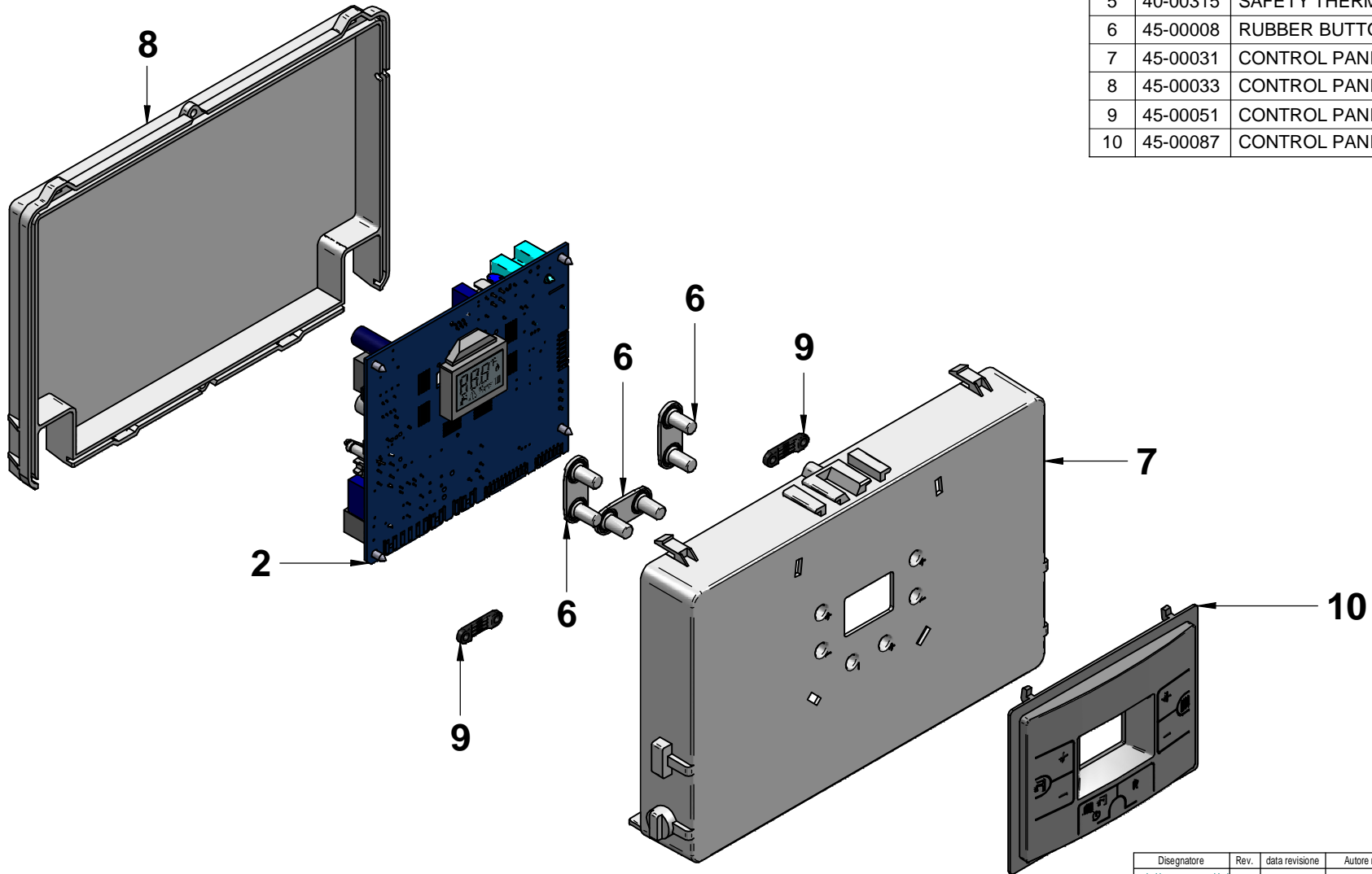




N°	Code	Description	Qty
1	12-01555	PIPE UC 65	1
2	12-01556	PIPE EF 65-116-65	1
3	12-01652	PIPE FOR EXPANSION TANK	1
4	25-00456	SAFETY VALVE 3 BAR	1
5	25-00457	PRESSURE SWITCH	1
6	25-00458	3-WAY ACTUATOR	1
7	25-00459	3-WAY GROUP	1
8	25-00460	MANIFOLD GROUP DIN 226	1
9	25-00461	FLOW SWITCH ON 2 l/min	1
10	25-00462	PUMP OTMSL INT 15/5-1	1
11	55-00405	CLIP FIX PIPE D14	2
12	55-00406	CLIP D18	1
13	55-00407	CLIP FOR PRESSURE SWITCH	3
14	55-00409	NUT RIBAS 1/2"F	2
15	55-00410	GASKEL	4
16	55-00411	OR Ø13.95 x 2.62	2
17	55-00412	CLIP FIX ACTUATOR	1
18	55-00413	FITTING UC	1
19	55-00429	OR Ø 17.86 x 2.62	6
20	55-00430	OR Ø 7.59 x 2.62	2
21	55-00431	CLIP FOR PUMP	2
22	55-00432	GASKEL 18x10x2	2
23	55-00433	GASKEL 21x28x2	2
24	55-00434	FLOW REGULATOR LT.8	1
25	55-00437	SCREW PT 1412 KB 50x10 ZBC	5
26	55-00438	FITTING FOR PUMP	2
27	55-00439	DRAIN	1
28	55-00440	DRAIN FITTING	1
29	55-00441	CLIP Ø2	1
30	55-00442	SCREW M5x28 TCEI	2
31	55-00443	KNOB	1
32	55-00444	SCREW M4x6 TCCR	1

Disegnatore	Rev.	data revisione	Autore revisione	Descrizione revisione
riccardo.baiocchi				
Modificato				
crislian.pozzaglini				
Data di creazione	Scala	Materiale	Sp.	Peso (Kg)
04/09/2015	1:2.2			1275.522
Note				
Descrizione completa HYDRAULIC GROUP OTMA COMPAT BLOCK 154BA PA 66				
Codice			Revisione	
65-00344			00	





N°	Code	Description	Qty
1	40-00281	3-WAY VALVE CABLE R2K PRC OTM	1
2	40-00302	PRINTED CIRCUIT BOARD	1
3	40-00307	POWER SUPPLY/PUMP/FAN CABLE	1
4	40-00309	D.H.W HEATING/SENSOR CABLE	1
5	40-00315	SAFETY THERMOSTAT / AIR PRESS. SWITCH /	1
6	45-00008	RUBBER BUTTON "+/-"	3
7	45-00031	CONTROL PANEL R5	1
8	45-00033	CONTROL PANEL BACK PLATE	1
9	45-00051	CONTROL PANEL TERMINAL FIXING CLAMP - R5	2
10	45-00087	CONTROL PANEL FRONT COVER	1

Disegnatore	Rev.	data revisione	Autore revisione	Descrizione revisione
crislian.pazzaglini				
Modificato				
crislian.pazzaglini				
Data di creazione	Scala	Materiale	Sp.	Peso (Kg)
29/05/2019	12			228.417
Note				
Descrizione completa CONTROL PANEL COMPLETE RSR 24 R7 - PDX				
Codice				Revisione
41-00335				00

